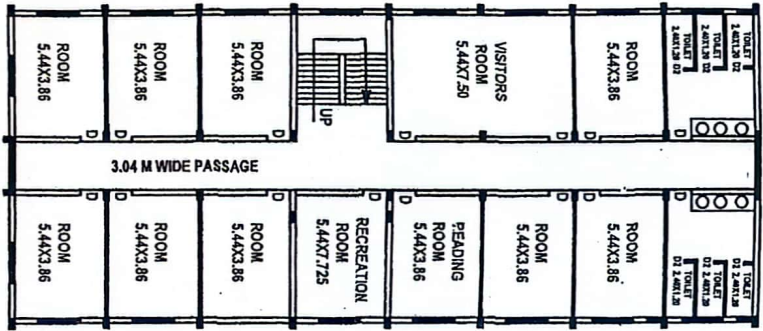
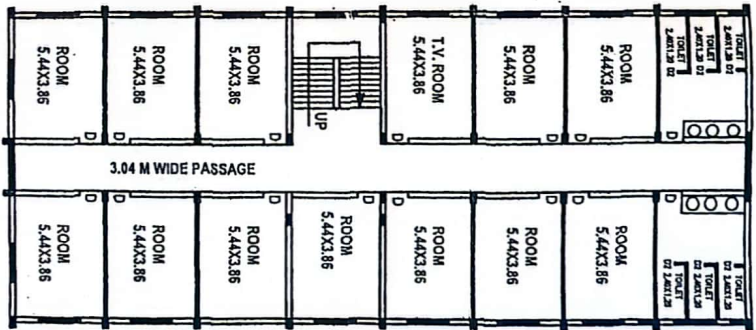


GROUND FLOOR PLAN (GIRL'S HOSTEL)



FIRST FLOOR PLAN (GIRL'S HOSTEL)



SECOND FLOOR PLAN (GIRL'S HOSTEL)

AREA STATEMENT

- 1. BUILT UP AREA ON GROUND FLOOR (GIRL'S HOSTEL) = 452.44 SQ.M.
- 2. BUILT UP AREA ON FIRST FLOOR (GIRL'S HOSTEL) = 452.44 SQ.M.
- 3. BUILT UP AREA ON SECOND FLOOR (GIRL'S HOSTEL) = 452.44 SQ.M.
- 4. TOTAL BUILT UP AREA (GIRL'S HOSTEL) = 1357.32 SQ.M.

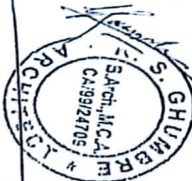
GIRL'S HOSTEL FOR SHIVA TRUSTS PROPOSED SHIVANJALI COLLEGE OF NURSING (BSC. NURSING) GUT NO. 131, AT PACHEGAON, TAL. NEWASA DIST. AHMEDNAGAR (M.S.)

NOTE: DO NOT SCALE DRAWING, FOLLOW THE WRITTEN DIMENSIONS ONLY.

SCALE: 1:100

EMMISSION DRAWING.

ARCHITECT



OWNER

SHIVA TRUST
President

Shiva Trust, Aurangabad.

Principal

Shivanjali College of Nursing
A/P Pachegaon, Tal. Newasa,
Dist. Ahmednagar

President
Shiva Trust, Aurangabad.

